

MINI SCREED™ C

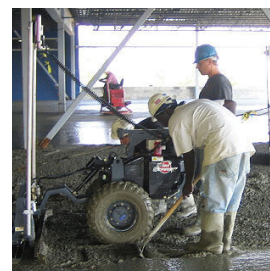


Get superior productivity and flatness with the **Mini Screed™ C**. Designed for small commercial, upper deck, and residential projects – the Mini Screed™ C provides you and your customers with high quality, professionally produced floors at a fraction of the cost of conventional methods. With laser-controlled accuracy, this machine will screed to higher tolerances than traditional methods and works well with cement mixes of varying slumps.



FEATURES/BENEFITS:

- > Improved floor quality
- > Increased profitability
- > Column-Block Protection
- > Lightweight and easy-to-maneuver
- > Easy to set-up, break-down, and clean
- > Fits easily in the bed of a pickup truck
- > CBSSR Laser Control System
- > Single and dual-slope capabilities
- > Auto-Leveling head
- > Compatible with the 3-D Profiler System®
- > Somero Quick GradeSet System™

**SPECIFICATIONS:**

WEIGHT	546 lbs / 248 kg
WIDTH	30.5" / 77.5 cm
HEIGHT	3' 7" / 1.1 m
LENGTH	6' 4" / 1.9 m
ENGINE	7.9 HP / 5.9 kW Honda GX240
TIRES	High-float (standard) / Moto (optional)
SCREED HEAD WIDTH	6' 8" / 2.0 m

WHAT OUR CUSTOMERS SAY:

"Metcon uses Somero's® Small Line equipment on nearly every flatwork pour. The improved flatness and production achieved by the Mini C or CopperHead® on grade or deck slab pours give them Most Valuable Equipment status."

— Glen Garber, **Metcon**

